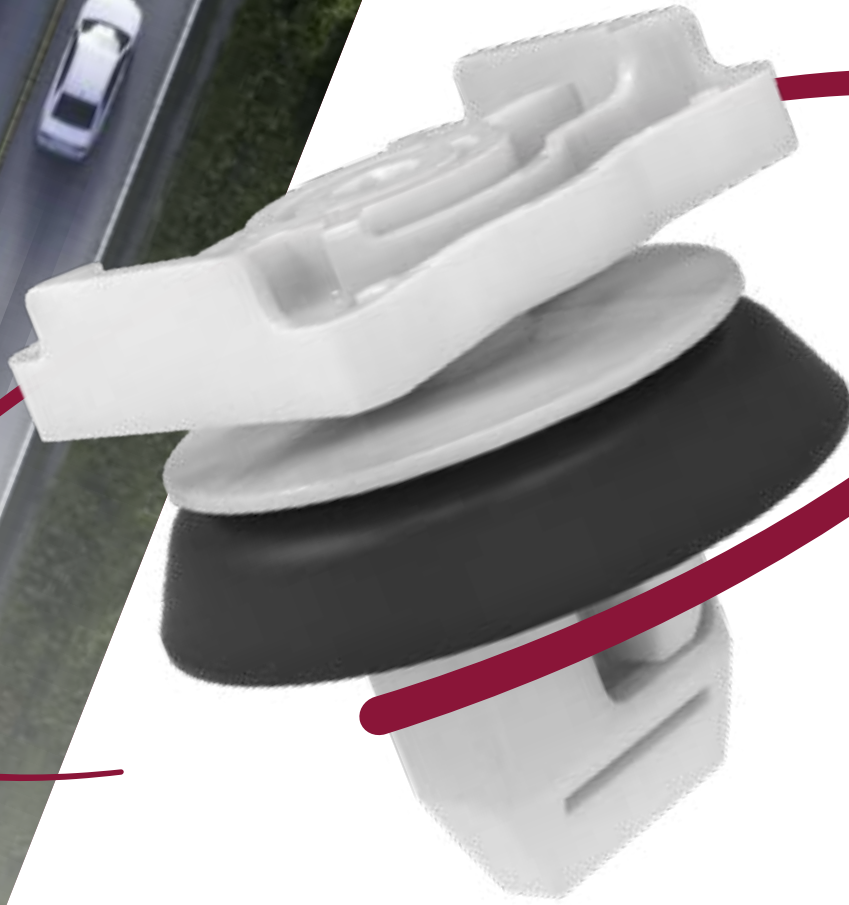


TW

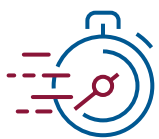
Global Fasteners

*Introducing
the innovative
technology
to replace
nuts & screws*



TORSION CLIP

KEY FEATURES



**Assembly time
reduction**



Ergonomic



Robust



Reusable



**Multi-
applications**

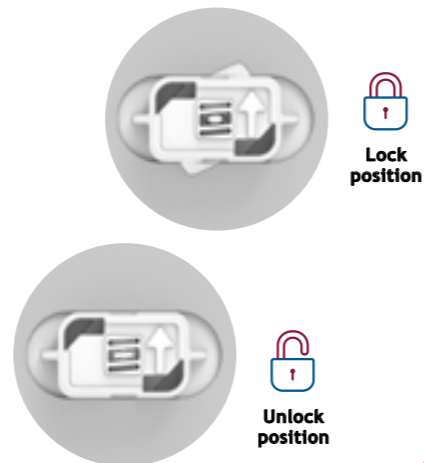
TORSION CLIP TECHNOLOGY



DIFFERENT CUSTOMIZABLE DESIGNS TO MEET ALL SPECIFICATIONS

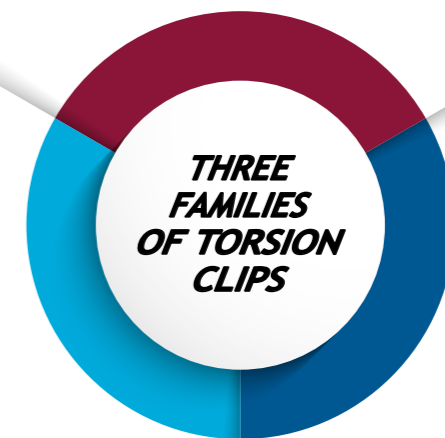
HOW DOES THE TORSION CLIP WORK?

Torsion clips utilize a patented torsion bar that twists when pushed into a hole. Once fixed, the bar springs back to its original position under the sheet metal. This torsion bar makes assembly easy and secure, guaranteeing low insertion and strong retention forces. No tool is required to assemble or pre-assemble the parts, just manually push the part into the corresponding hole.



TOP

Dismounting by the head of the part



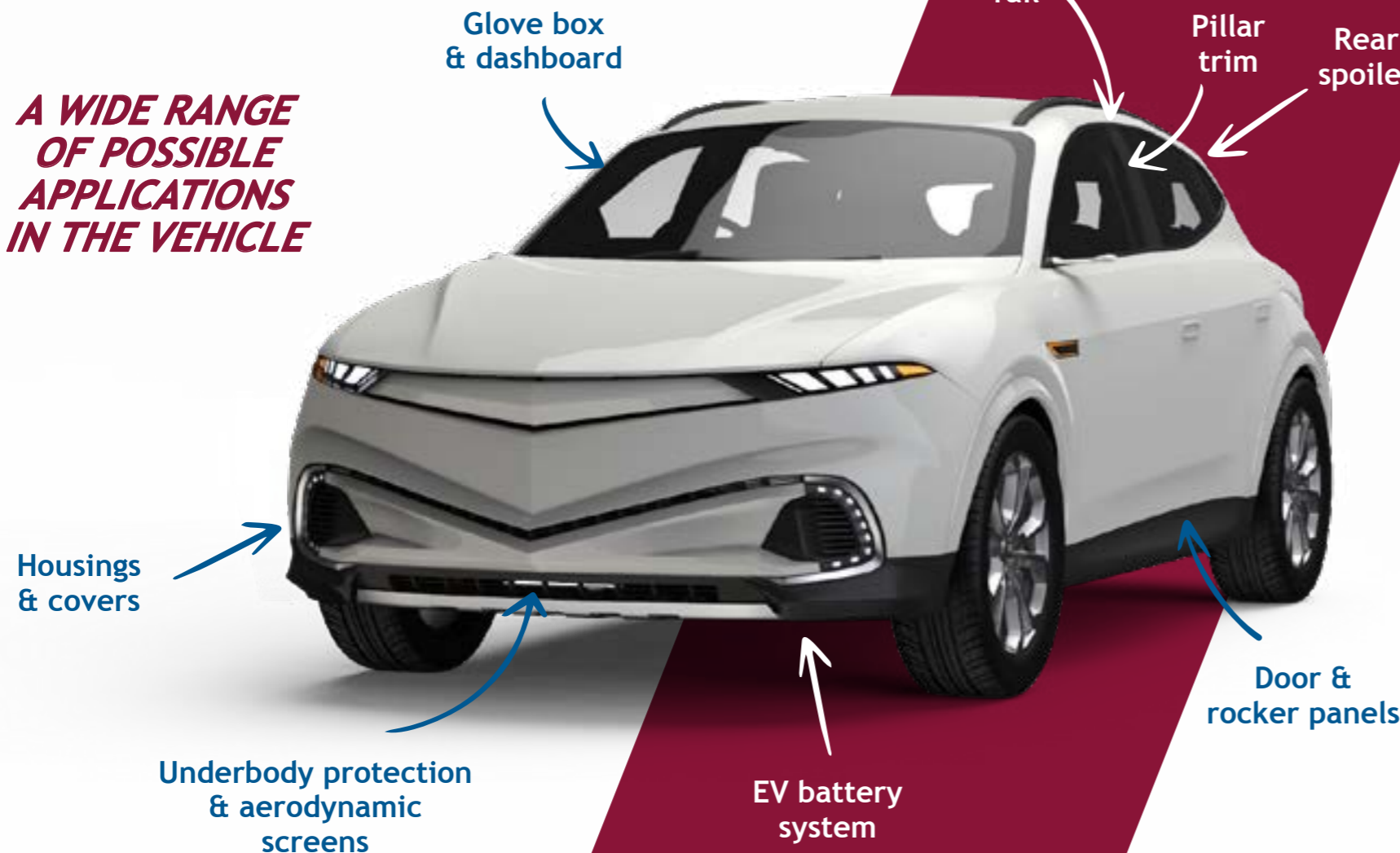
REVERSE

Dismounting by the bottom of the part

LEVER

Dismounting by the side of the part, thanks to the levered arm

A WIDE RANGE OF POSSIBLE APPLICATIONS IN THE VEHICLE



WATCH THE VIDEOS

TOP

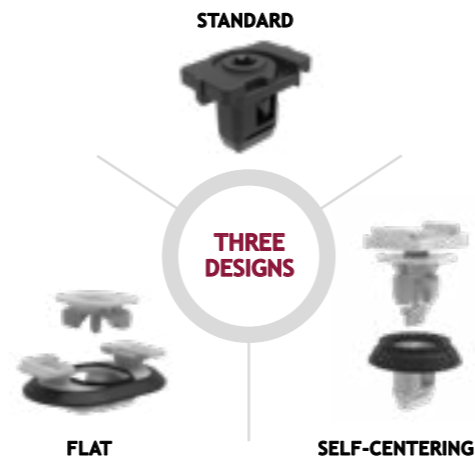
LEVER

REVERSE



Torsion Clip TOP FAMILY

Different designs exist to create strong and robust assemblies by fastening and dismounting from the head of the torsion clip.

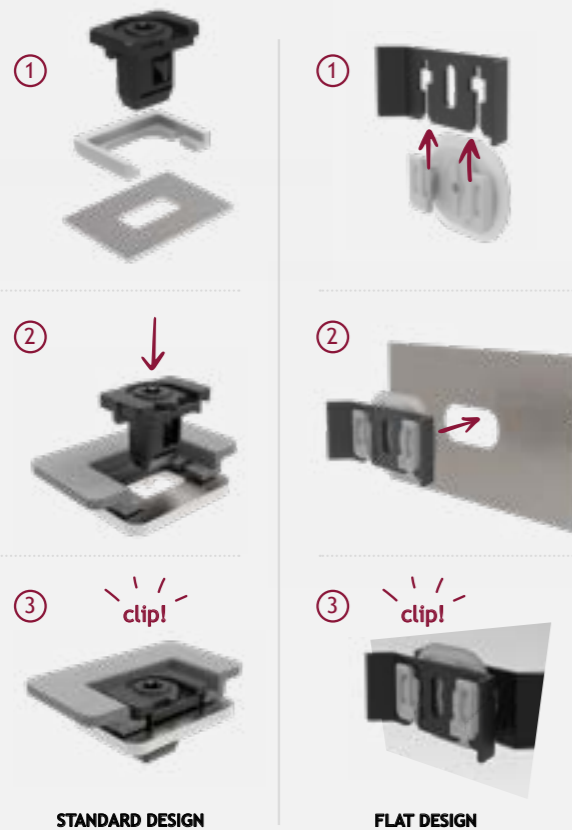


Torsion Clip LEVER FAMILY

The torsion bar is situated in the head of the part. This means that everything turns, except the head which stays rigid in the doghouse. The dismounting is made by the side of the part for applications where the access can be difficult.

ASSEMBLY

The Torsion Clip Top family can be pre-assembled and is ready to use in its delivery position. Assembly is achieved by manually sliding / pushing the part into the hole.



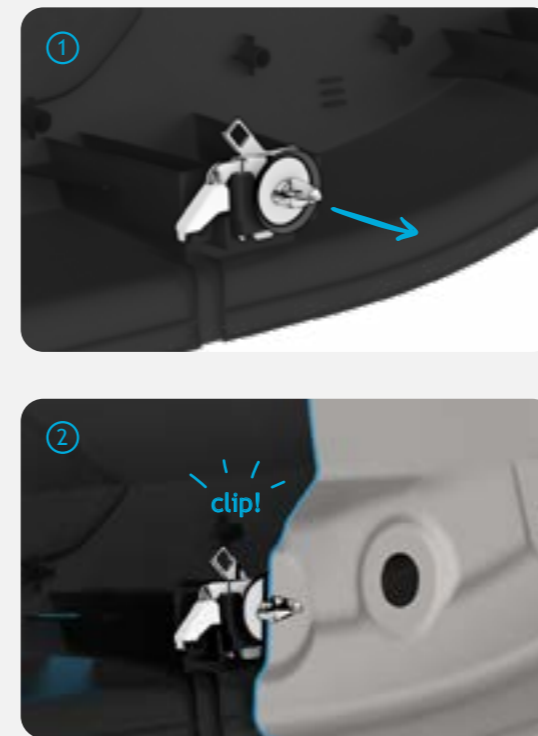
DISASSEMBLY

The Torsion Clip Top family can be dismantled by using a standardized tool with a quarter turn in the head of the part.



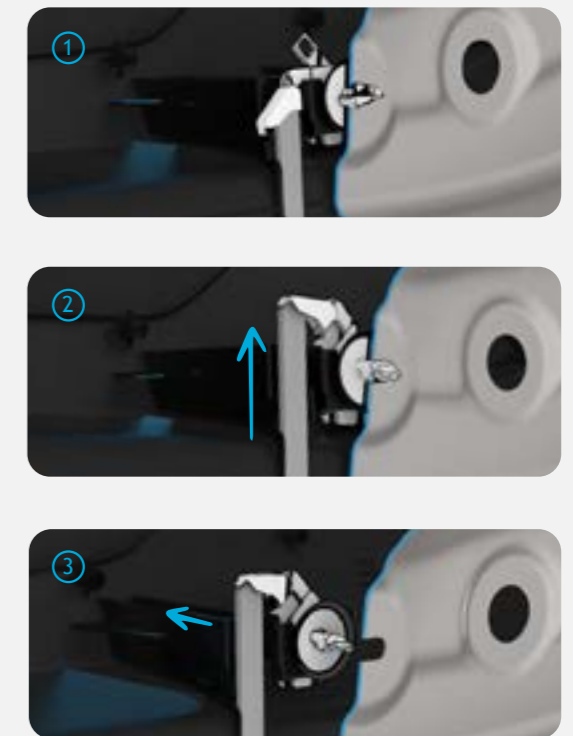
ASSEMBLY

The part is clipped into a doghouse of the door panel. To assemble, the part is simply pushed into the corresponding hole in the metal door frame.



DISASSEMBLY

Unclip the part through the small slot in the door panel using a screwdriver or similar tool. Push the designed arm upwards and subsequently release the panel from the door frame.



TECHNICAL FEATURES



Insertion force: < 45 N (30 N on painted hole)
Holding force: > 500 N (up to 600 N)
Minimum thickness: 0,7 mm
Rectangular hole sizes: 6,2x12,2 / 8,2x16,2 / 8,2x20,2 mm
Oblong hole sizes: 16,2x32,2 / 20x45 mm

Other dimensions & designs on request
1 daN = 10N



TECHNICAL FEATURES



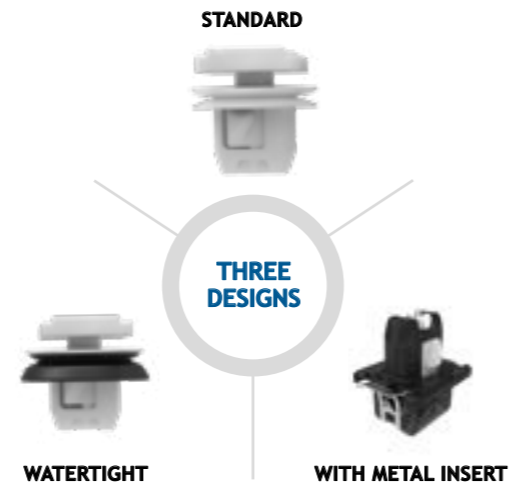
Insertion force: < 45 N (30 N on painted hole)
Holding force: > 500 N (up to 600 N)
Minimum thickness: 0,6 to 1,2 mm
Oblong hole sizes: 8,2x16,2 mm

Other dimensions & designs on request
1 daN = 10N



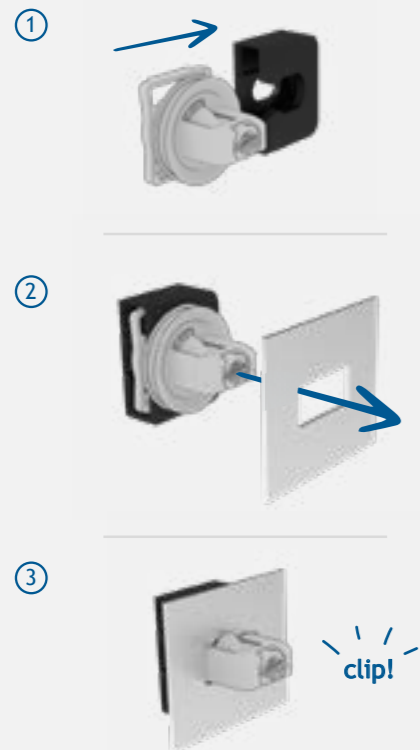
Torsion Clip REVERSE FAMILY

In the case where the part can not be disassembled on the head, the reverse design is the right alternative solution.



ASSEMBLY

The part is slid into the doghouse. Once in position, it can simply be pushed into the corresponding hole in the sheet metal.



DISASSEMBLY

To dismount, a quarter turn is made at the bottom of the part using a standard tool.



TECHNICAL FEATURES

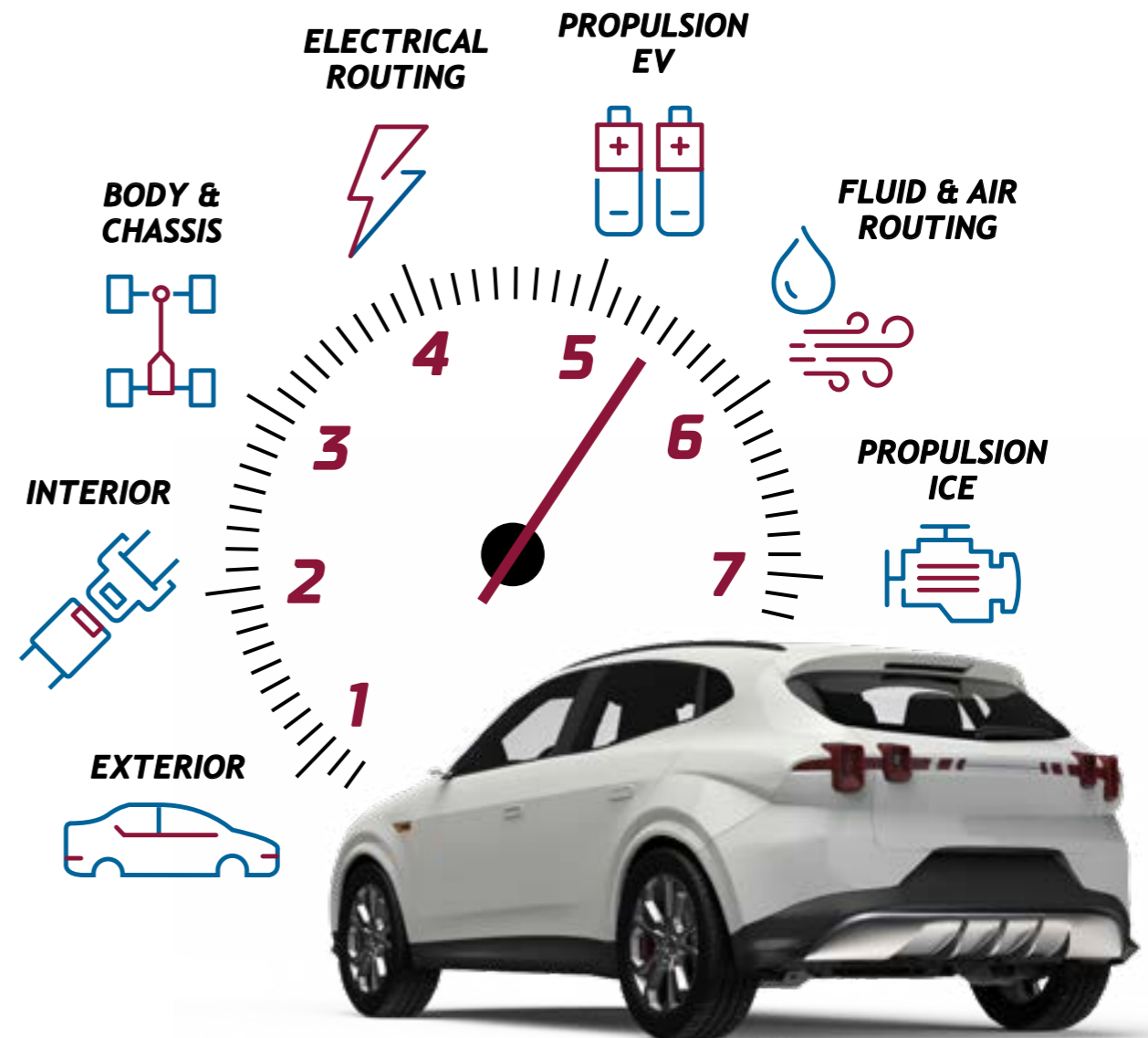


- Insertion force:** < 45 N (30 N on painted hole)
- Holding force:** > 500 N (up to 600 N)
- Minimum thickness:** 0,7 mm
- Rectangular hole sizes:** 9,2x18,2 mm

Other dimensions & designs on request
1 daN = 10N



Fastening solutions provider for any assembly anywhere in the vehicle

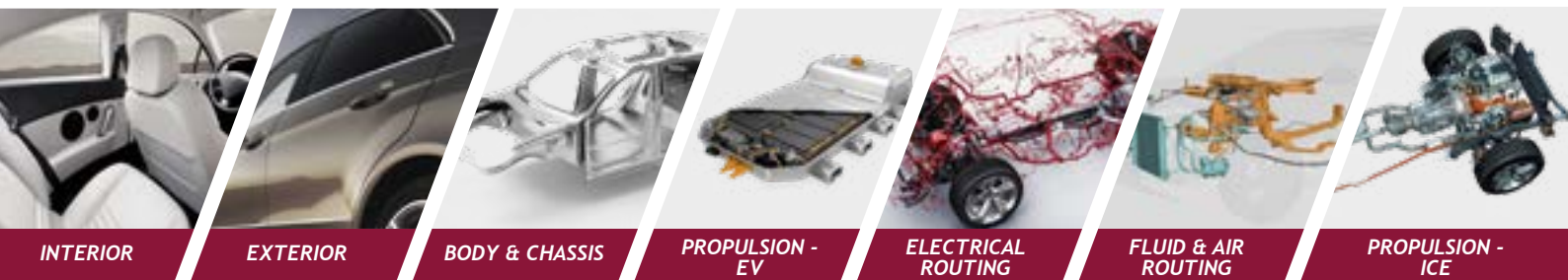


www.itw-fasteners.com



Provide **smart, innovative plastic fastening solutions** for the automotive industry based on deep application knowledge, supporting the transition to sustainable driving.

Closely work with our customers from the first steps of the design project to supply high value-creating solutions that make assembly **easy, simple, cost-effective**.



Contact our expert's team for any assembly projects:
contact-eura@itwautomotive.com

www.itw-fasteners.com